



## 8-97240057-0 8972400570 AIR METER Air Flow Control Sensor ISUZU NKR77 4KH1 600P

### Our Product Introduction

for more products please visit us on [isuzuautopartspareparts.com](http://isuzuautopartspareparts.com)

#### Basic Information

- Place of Origin: China
- Brand Name: OEM
- Model Number: NKR77 4KH1 600P
- Minimum Order Quantity: 10pcs
- Packaging Details: Neutral packing
- Delivery Time: 10-15days
- Payment Terms: L/C, T/T, Western Union
- Supply Ability: 100,000,000/months

**HAOSH**

Email:info@gzhaosh.com

#### Product Specification

- Part Name: Air Flow Control Sensor
- Part Number: 8-97240057-0 8972400570
- Model: NKR77 4KH1 600P
- Quality: High
- Color: As Picture Shows
- Moq: 10 Pcs
- Price: Competitive
- Material: Plastic

**HAOSH**

Email:info@gzhaosh.com

#### More Images

**HAOSH**

Email:info@gzhaosh.com

## Product Description

**AIR METER Air Flow Control Sensor ISUZU NKR77 4KH1 600P 8-97240057-0 8972400570**



**HAOSH**

*Email: [info@gzhaosh.com](mailto:info@gzhaosh.com)*



**HAOSH**

*Email: [info@gzhaosh.com](mailto:info@gzhaosh.com)*

## Certificates and factories





## Applicable Models

<b>ISUZU TRUCK</b> 	NPR	NQR	NKR
	NMR	NLR	ELF
	Vc46	FVR	FTR
	CYZ	CXZ	EXZ
	JMC	KY	
	N800	N900	N720
	N725		
<b>ISUZU PICKUP</b> 	DMAX 02-04	DMAX 06-11	DMAX 12-
	LT	RM	MUX
	TFR		
<b>TRANSIT</b> 	TRANSIT	V348 2.2	V348 2.4
	V362	U375	

## PACKING&SHIPPING



Inner Box Packaging



Carton Packaging



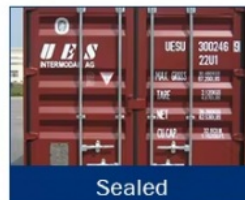
Pallet Packaging



Container



Samll One First



Sealed

### PACKAGING DETAILS

Customized packing: We accept customized package, with your logo or brand printed on your label and box.  
Export packing: We use export carton with shipping marks for the protection of the long way shipping.



### Our advantages

- 1.We specialize in Japanese auto parts
- 2.High-Quality goods , Aftermarket quality & OEM quality

3.No MOQ requipments Short Delivey time

4.Short Delivey time

### Products range

1.Engine Parts : Thermostat ,Auto Cylinder , Starter Motor , Pump , Engine Mount , Injetor Pump Valve , Engine Pipe , Timing , Caps, Pulley , Turbocharger ;

2.Chassis Parts : Steering System , Shock Absorber , Suspension , Ball Joint , Drive Shaft , Auto Tank , Differencial Parts , Auto Cable , Wheel Hub ;

3.Electrical System : Ignition system ,ABS Speed Sensor ,Auto Switch ,Relay ;

4.Brake System & Clutch System & Booster

5.Cooling System : Fan Clutch , Radiator , A/C , Fan Blade ;

6.Engine Gasket Set & Repair Kits;

7. Belt & Bushing & Bearing & Oil Seal ;

8.Body Exterior: Lamps , Fender , Bumper , Grille , Mirror ;

8-97240057-0 Air flow meter for ISUZU NKR77 4KH1 600P models.

It can accurately measure the air flow into the engine and provide accurate data for the vehicle's fuel injection system. For example, when the vehicle is climbing a hill, it can adjust the fuel supply according to the air intake in time to ensure that it has plenty of power.

In daily driving, it makes the fuel burn more fully, improves engine efficiency, and reduces fuel consumption and exhaust emissions.



HAOSHENG

Guangzhou Haosheng Supply Chain Co., Ltd



86-18024581436



hshauto@gzhaosh.com



isuzuautospareparts.com

Guangzhou Baiyun District Jiaoteng Street Yueqiang Creative Park 3 Building 201