

Auto Steering System Belt Tensioner Pulley 1308012TAB1 JMC Wholesal

Our Product Introduction

for more products please visit us on isuzuautopartspareparts.com

Basic Information

- Place of Origin: China
- Brand Name: HOSEM
- Model Number: 1308012TAB1
- Minimum Order Quantity: 1-2PCS
- Price: Negotiable
- Packaging Details: wooden case/as customers 's request
- Delivery Time: 10-15days After receiving the deposit
- Payment Terms: L/C, Western Union, T/T
- Supply Ability: 1000PCS/MOMTH



Product Specification

- Car Model: JMC
- Size: Standard
- Warranty: 3 Months
- Payment Methods: L/C, Western Union, T/T
- Another Name: Automobile Parts
- Application: Engine Parts
- Condition: New
- Customized Service: Supportable
- Aftermarket: OEM Replacement
- Packing: Wooden Case/as Customers 's Request
- Shipping: Ocean/Air Cargo /Express



More Images



Product Description

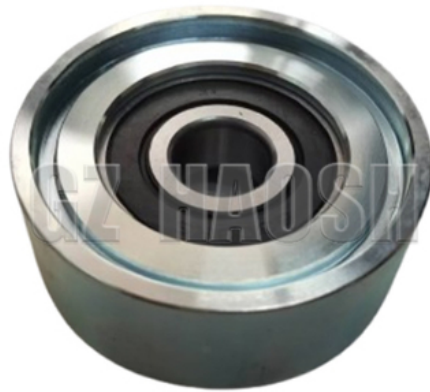
1,Core parameter table

Item	Content
Adapted vehicle type	JMC
Material	Metal
OE No.	1308012TAB1
Warranty Period	3 Months



GZ HAOSH

Email: info@gzhaosh.com



GZ HAOSH

Email: info@gzhaosh.com

2, Factory Strength

SHOWROOM





3,Quality Assurance and After-sales Service

Working Days 24-Hour Email Reply

3-Month Warranty:Free Replacement for Non-Human Damage

4,Product Advantages

We offer the following services

Genuine OE Fitment – Direct replacement with no modifications required. Avoids drivetrain noise and premature belt wear caused by poor compatibility.

Premium Metal Construction – Built to last under high heat and frequent use. Reduces downtime and long-term costs.

Precision Engineering – Accurate groove design and smooth surface prevent belt slip, ensuring efficient power transfer. High-quality bearings (if applicable) support quiet and stable performance.

Trustworthy Warranty – Comes with a clear warranty (e.g., 3 months), including free replacements for non-human damages.

5,Transaction

Price	Negotiable
MOQ	No MOQ
Payment	L/C, Western Union, T/T
Shipping	Ocean/Air cargo /Express

6,Please read the following notes carefully

This part is only for the corresponding models. Please consult customer service to confirm compatibility before placing an order to avoid return/exchange due to mismatching issues.

Packaging Details: Neutral Packaging / as customers 's request.

7,Frequently Asked Question

Q:Can I accept customization?

A:We provide customized service, but there is a minimum order quantity requirement. (Please consult customer service for details)

Q:Is there any after-sales service?

A:We will provide you with after-sales service from 9:00 a.m. to 6:30 p.m. from Monday to Saturday.

Q:How long is the delivery time?

A:Due to different product types and quantities, the delivery time is different.

Our advantages:

With over 20 years of experience, we have been specializing in and long committed to Japanese auto parts. Boasting a team of professional and senior experts, we are a trustworthy partner for Japanese automotive components.

Japanese brands such as Toyota, Honda, Isuzu, Mitsubishi Corporation, Subaru, Mazda, JMC and so on, from engine to exterior decoration, we offer a comprehensive, carefully selected selection of high-quality parts.

Key categories include:

Suspension and steering: control arms, bushings, ball joints, shock absorbers, tie rods, power bogies, etc.

Braking system: High-grade brake pads, discs, calipers, drums and master cylinders provide reliable braking power.

Engine and performance: timing chain, gasket kit, turbocharger components, radiator, filters (oil, air, fuel), and OEM grade components.

Transmission & Driveline: Clutch kit, CV joint, tripod bearing and universal joint for smooth power transfer.

Electrical and ignition: Starters, alternators, sensors, fuel pumps, ignition coils, and wiring necessities.

Body and Exterior: Fenders, Bumpers, Grille, Lights, Seals and Wiper Blades to keep your vehicle looking sharp.

We source parts that meet or exceed OEM standards, ensuring durability, performance, and a perfect fit for your Japanese vehicle.



Guangzhou Haosheng Supply Chain Co., Ltd



86-18024581436



hshauto@gzhaosh.com



isuzuautospareparts.com

Guangzhou Baiyun District Jiaoteng Street Yueqiang Creative Park 3 Building 201